

Pixelate 6313





Preliminary specification according to EN 1307

Type of manufacture	Tufted 1/10" Structured loop pile	ISO 2424
Pile fibre composition	Solution dyed BCF Polyamide 6 and ECONYL® (ECONYL® is made from 100% regenerated content*)	ISO 2424
Dimensions	50 x 50 cm / 19.68" x 19.68" (20 tiles per box)	EN ISO 24342
Primary backing	Polyester fleece	ISO 2424
Secondary backing	DESSO EcoBase®** - Containing at least 75% C2C positively defined recycled content	ISO 2424
Total thickness	5.5 mm 0.2 inch	ISO 1765
Effective pile thickness	2.6 mm 0.10 inch	ISO 1766
Total mass	4200 g/m ² 124.0 oz/yd ²	ISO 8543
Total pile mass	725 g/m ² 21.4 oz/yd ²	ISO 2424
Effective pile mass	460 g/m ² 13.6 oz/yd ²	ISO 8543
Pile density	0.177 g/cm ³ 0.0064 lb/in ³	ISO 8543
Number of tufts	1540/dm ² 128759/yd ²	ISO 1763
Stroll test	≤ 2.0 kV	ISO 6356
Vertical resistance	≤ 1 x 10 ⁹ Ohm	ISO 10965
Use classification	33 Commercial - heavy use	EN 1307
Dimensional stability	≤ 0.2 %	EN 986
Impact sound reduction ΔL _w	21 dB	ISO 10140
Noise reduction	0.15 α _w	ISO 354
Flammability	B _{fl} - s1 (loose laid tested)	EN 13501-1
Light Reflectance Value (LRV)	See right side page per colour	BS 8493
Colour depth (L)	See right side page per colour	CIELAB

* ECONYL® is a yarn made from 100% regenerated content. The total % of regenerated content varies per product and per colour. Whether a colour contains ECONYL® and the exact % thereof can be found on our website: www.desso.com.

** DESSO EcoBase® is a polyolefin based backing.

To order this product:

- click on any of the images
- visit our website: www.interiorsthatdeliver.co.uk
- call 020 8481 6697

with EcoBase™ backing



SILVER

© 2019 Cradle to Cradle (www.cradletogether.com)
Sponsored by Cradle to Cradle Product Innovation Institute



Made with 100% Regenerated Nylon



CE
EN 14041
0493-CPR-0002

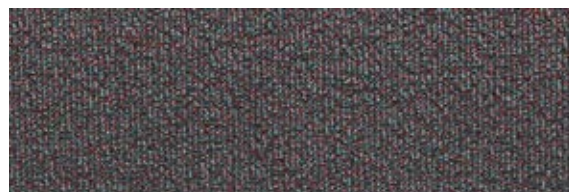
Manufactured by
Tarkett BV
PO Box 169
NL-5240 AD
Waalwijk



2917
L 56,69 / LRV 24,60



4431
L 45,77 / LRV 15,10



8902
L 33,28 / LRV 7,67



9096
L 52,20 / LRV 20,32



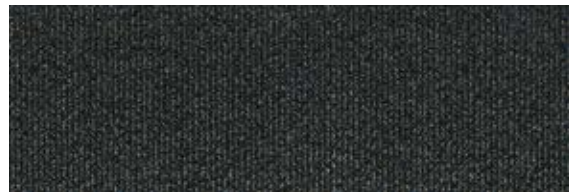
9505
L 49,23 / LRV 17,78



9522
L 40,68 / LRV 11,66



6313
L 55,94 / LRV 23,85



9031
L 25,71 / LRV 4,65